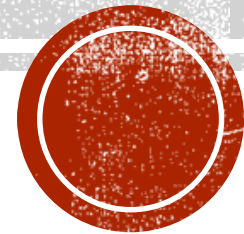


CRITIQUE

Or, What in the heck have I done!





This Photo by Unknown Author is licensed under [CC BY-SA](#)

WHAT IS CRITIQUE?



AN OBJECTIVE VIEW OF
A WRITTEN PIECE



CONSTRUCTIVE
FEEDBACK



A CHANCE AT GROWTH
AND LEARNING FOR
READER AND AUTHOR



EXPOSURE TO NEW
STYLES AND
VIEWPOINTS



I HAVE A PIECE, NOW WHAT?



**FIND A CRITIQUE
GROUP**



**MAKE SURE IT IS AS
CLEAN AS POSSIBLE**



**FOLLOW
SUBMISSION
GUIDELINES**



**SUBMIT!!!
VOLUNTEER!!!**



IFWA SUBMISSIONS

- VOLUNTEER
- SUBMIT TWO COPIES OF WORK
- WILLIAM SHUN FORMAT PERFERED
- <https://www.shunn.net/format/story.html>

- READ THE COPY YOU SUBMITTED TO YOUR CRITIQUERS ON MEETING NIGHT
- YOU HAVE 10 MINUTES TO READ, PRACTICE AT HOME. I PROMISE YOU WILL FEEL BETTER!
- MAXIUM OF 5,000 WORDS



WHAT DOES A CRITIQUE LOOK LIKE?

- **CONSTRUCTIVE**
- **GOLDEN RULE**
- **SUPPORTIVE**
- **EXAMPLES GIVEN**
- **UNDERSTAND THE LEVEL OF THE WRITER**
- **LOOK AT ALL THE ELEMENTS OF THE STORY**
- **BE INVESTED**
- **BE TRUE TO THE WRITER**

WHAT A CRITIQUE SHOULDN'T BE

- **DESTRUCTIVE**
- **HARSH OR DEMEANING**
- **PERSONAL – FOCUS ON THE WORK NOT THE WRITER**
- **AN ESSAY ON HOW YOU WOULD DO IT**
- **VAGUE**
- **PASSIVE**
- **POINT OUT PROBLEMS WITH NO SUGGESTIONS**
- **A PLACE TO MINE FOR YOUR OWN WORK (Yes, we are talking plagiarism)**



TAKE

TAKE NOTES
THERE IS A LOT OF
INFORMATION GIVEN



LISTEN

LISTEN TO COMMON
COMMENTS. THIS IS NOT THE
TIME TO DEFEND OR EXPLAIN



THANK

THANK THE
PERSON/PERSONS FOR
READING YOUR WORK



REVISIT

REVISIT THE NOTES IN A FEW
DAYS AND APPLY THE
COMMENTS OR
SUGGESTIONS YOU FEEL ARE
RIGHT FOR YOU AND THE
PIECE.

HOW TO REACT TO A CRITIQUE



AT AN IFWA MEETING

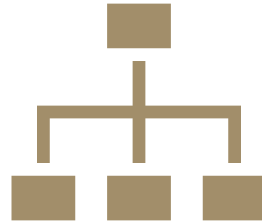
- **ESTABLISHING TRUST**
- **SAFE ENVIRONMENT**
- **BE BRIEF**
- **BRING UP NEW COMMENTS**
- **START WITH POSITIVE, END WITH POSITIVE AND BE CONSTRUCTIVE IN THE MIDDLE.**



This Photo by Unknown Author is licensed under [CC BY](#)



A smaller group of members of a larger group that meets outside of the regular meetings



The code of conduct should be that of the main group



May handle submission guidelines differently than main group

SPLITTER / SPLINTER GROUPS





**THE SECRET
HANDSHAKE**



**OTHER
WRITERS**



**RELIABLE
ONLINE SITES**



**CRITIQUE
GROUPS**

RESOURCES





NOW, I AM SURE YOU HAVE
QUESTIONS.



IF YOU ARE THINKING IT,
SOMEONE ELSE IN THE
ROOM IS TOO.

THANK YOU

